

## Biomedical Freezer Solutions

**-60°C | -40°C | -30°C | -25°C**



APR 2022

**Qingdao Haier Biomedical Co.,Ltd.**

No.280 Feng Yuan Road, High-tech Zone,  
Qingdao, 266109, P.R. China  
Tel: +86-0532-88935593  
Website: [www.haiermedical.com](http://www.haiermedical.com)



Haier Biomedical  
International



Haier Biomedical  
International



@haiermedicalint



Haier Biomedical  
International



Haier Biomedical  
International

Note: If a slight difference occurs between pictures and actual products, please refer to actual products. Our company reserves the right of final interpretation of this brochure, please contact us for any further information if required.





# CONTENT

## Biomedical Freezer

• -60°C Biomedical Freezer .....	01
• -40°C Biomedical Freezer .....	03
• -30°C Biomedical Freezer .....	09
• -25°C Biomedical Freezer .....	23





A versatile low-temperature freezer commonly used within in hospitals, blood stations, diseases control & prevention centers, research institutions, bioscience laboratories and medical laboratories. It is suitable for storing a wide variety of biological products including viruses, bacteria, red blood cells, white blood cells, skin, bone and semen as well as ocean-going supplies and electronic devices. It can also provide a low-temperature environment for testing of special materials.

The secondary application is for the storage of fishery products such as tuna, Australian lobster, salmon, South American shrimps, Argentina red shrimp, top-quality beef, kanpachi, octopus, yellowtail, bonito fish,grouper, and fugu rubripes. This is a requirement for fishery products for human consumption and hence these freezers are popular among professional oceanic fisherman, seafood distributors, speciality seafood stores and sushi restaurants and commercial food manufacturers.



Dual-seal design



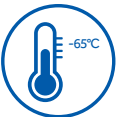
Efficient and reliable fan



German made energy efficient compressor



Digital temperature control display



Quickly freeze sea food products to retain their original taste, structure and freshness.



Low noise output, noise cancelling technology yields a smoother operation and a sound level of less than 43dB(A).



Multiple alarm system includes temperature alarm, and sensor error alarm.



HC refrigerant system is optimized to improve refrigeration efficiency by 30 %, and save energy by about 50%.

Single compressor auto cascade refrigeration system provides high efficient cooling power. The 100mm thick insulation conserves energy and provides optimal protection of internal cold temperature.



Creative dual seal design retains the cold temperature more effectively, and eliminates condensation on gaskets.



Interior material is certified food grade 304 stainless steel, ensuring safe contact between food and interior liner.



Interior lock design ensures product safety. Lockable casters permit ease of installation and maneuvering.



Water proof digital control delivers precise temperature for storage. Display and control system are easy to use.

Specifications

Model		DW-60W138	DW-60W258	DW-60W388
Technical Data	Cabinet Type	Chest	Chest	Chest
	Climate Class	N	N	N
	Cooling Type	Direct Cooling	Direct Cooling	Direct Cooling
	Refrigerant	HC	HC	HC
	Sound Level ((dB(A))	43	43	43
Performance	Cooling performance (°C)	-60	-60	-60
	Temperature Range (°C)	-30~-60	-30~-60	-30~-60
Control	Controller	Microprocessor	Microprocessor	Microprocessor
	Display	LED	LED	LED
Electrical Data	Power Supply (V/Hz)	220-240/50	220-240/50	220-240/50
	Power (W)	370	410	420
	Electrical Current (A)	3	3	3.5
	Power Consumption (kWh/24h)	4.5	5.5	6.5
Construction	Capacity (L/Cu.Ft)	138/4.9	258/9.1	388/13.7
	Net/Gross Weight (approx)	kg	62/75	88/108
		lbs	137/165	194/238
	Interior Dimensions (W*D*H)	mm	580*445*620	1000*445*620
		in	22.8*17.5*24.4	39.4*17.5*24.4
	Exterior Dimensions (W*D*H)	mm	790*770*950	1210*770*950
		in	31.1*30.3*37.4	47.6*30.3*37.4
	Packing Dimensions (W*D*H)	mm	815*800*990	1255*800*990
		in	32.1*31.5*39	49.4*31.5*39
Loading Quantities	Container Load (20'/40'/40'H)	28/56/56	22/46/46	14/28/28
Alarms	High/Low Temp	Y	Y	Y
	Sensor Error	Y	Y	Y
Accessories	Caster	Y	Y	Y
	Porthole	Y	Y	Y
Certification	CE	Y	Y	Y

The double door -40°C biomedical freezer models offer a large capacity storage space with rapid cooling. Integrated design of cold shelf and evaporator provides additional refrigeration efficiency. Designed to store vaccines, blood plasma and many other biological materials. Installations can be found in research institutions and clinical sites in the life science, pharma, biotech, medical and electronics sectors.

**DW-40L508****DW-40L348**

Control panel



Drawer

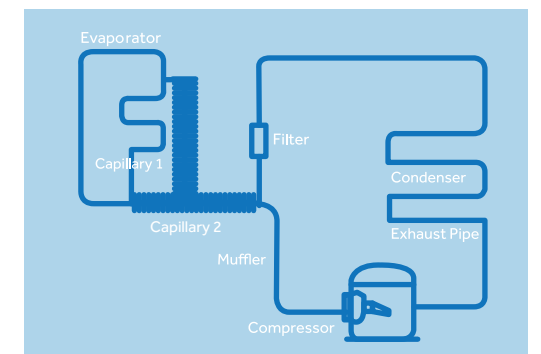


Shelf

The DW-40L348 is based on the original work horse platform of DW-40L508. The new freezer model operates with two capillary tubes and is equipped with dual gaskets to improve the temperature uniformity through the chamber. It can be installed to satisfy tougher application requirements in universities, research institutions and blood banks.

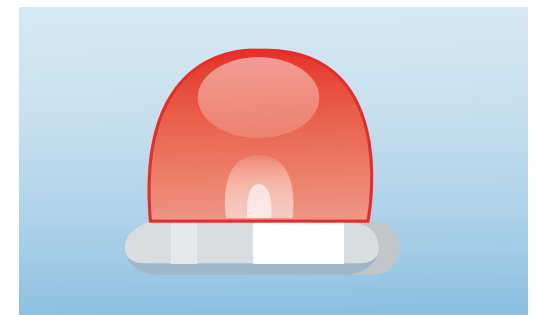
### Reliability and Key Features

- Rated for -40°C at 32°C ambient
- Rapid cooling with shelf evaporator
- Improved temperature uniformity with dual capillary tube design at the range of -20°C to -40°C
- The temperature uniformity is  $\pm 4^\circ\text{C}$  with the setting temperature of -40°C
- Improved door seal design with two gaskets maintains cabinet temperature more efficiently
- Reduced frost buildup
- 90mm insulation thickness for additional robustness, less power consumption and better temperature retaining ability
- Drawer design maximizes storage space. One unit can hold 360 bags of 230 ml blood bags
- Optional USB interface



### Safety

- Multiple malfunction alarms include high/low temperature, power failure, sensor error, low battery, high ambient temperature
- Two types of alarms: buzzer and flashing light, remote alarm



### Ergonomic Design

- LED digital display for clear observation
- Double door design with independent locks reduces air leakage to ensure temperature stability and lower power consumption
- Tracks to label drawers for product identification





### Key Features

- Microprocessor control, adjustable temperature range : -20°C to -40°C
- LED digital display and increment at 0.1°C
- Permanently lubricated cooling fan for safety and longevity
- Rapid cooling with shelf evaporator
- Removable double outer door seal design, good sealing effect and energy saving

### Ergonomic Design

- USB data logging and temperature recorder (optional)
- Padlock with stainless steel cylinder for safe storage
- Drawers are designed with label holders for item identification

### Safety

- Multiple malfunction alarms include high/low temperature, sensor error, power failure, high ambient temperature, low battery, door ajar
- Alarm Types: buzzer, flashing light, remote alarm



Reliable Performance



USB



Malfunction Alarms



Double Outer Door Seal



Padlock



Caster and feet



Removable double outer door seal



### Reliability and Key Features

- High efficiency low temperature compressor with known field reliability
- Chemically stable, CFC-free, commercially available and environmentally safe refrigerant
- Permanently lubricated cooling fan for safety and longevity, high density insulation foam for stable and long term storage temperature
- Optimized refrigeration system designed to maximize cooling effect and temperature uniformity
- Microprocessor control, digital display, adjustable temperature range: -20°C~-40°C
- LCD digital display for clear observation
- Wide voltage tolerance design with applicable voltage range of 198~252 V/AC

### Safety

- Multiple malfunction alarms to detect high / low temperature, sensor error and power failure
- Two types of alarm indications: audible buzzing and visual flashing light

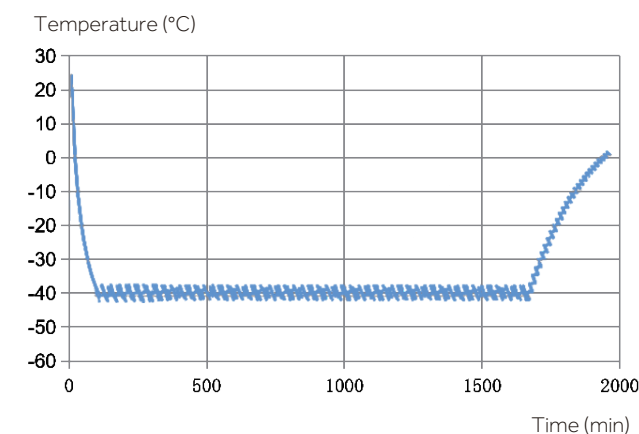
### Ergonomic Design

- Door lock for storage safety
- Standard Ø25mm access port for testing
- Corrosion proof cabinet interior design
- Suitable for a variety of storage baskets



Inner

Typical Performance Characteristic of DW-40W138J





Specifications



	Model	DW-40L92		DW-40L262		DW-40L278		DW-40L348		DW-40L508		DW-40L568J	DW-40W138J		DW-40W255J	DW-40W380J				
Technical Data	Cabinet Type	Upright		Upright		Upright		Upright, Double Door		Upright, Double Door		Upright	Chest		Chest	Chest				
	Climate Class	SN N		SN N		SN N		SN N		SN N		SN N	SN N		SN N	SN N				
	Cooling Type	Direct cooling		Direct cooling		Direct Cooling		Direct Cooling		Direct Cooling		Direct cooling	Direct cooling		Direct cooling	Direct cooling				
	Defrost Mode	Manual		Manual		Manual		Manual		Manual		Manual	Manual		Manual	Manual				
	Refrigerant	HC		HC	CFC-Free	HC	CFC-Free	HC		HC	CFC-Free	HC	HC		HC	HC				
	Sound Level (dB(A))	29		41	44	40	44	41		41	45	44	42		42	42				
Performance	Cooling Performance (°C)	-40		-40		-40		-40		-40		-40	-40		-40	-40				
	Temperature Range (°C)	-20~-40		-20~-40		-20~-40		-20~-40		-20~-40		-20~-40	-20~-40		-20~-40	-20~-40				
Control	Controller	Microprocessor		Microprocessor		Microprocessor		Microprocessor		Microprocessor		Microprocessor	Microprocessor		Microprocessor	Microprocessor				
	Display	LCD		LCD		LED		LED		LED		LCD	LCD		LCD	LCD				
Electrical Data	Power Supply (V/Hz)	220-240/50/60		220-240/50/60		115/60	220-240/50	220-240/50/60		220-240/50		208-230/60	220-240/50		220-240/50		220-240/50			
	Power (W)	340		310	600	275	370	280		285	510	340	260		370	450				
	Electrical Current (A)	2.2		2	7.5	2.9	5.1	2.9		2.9	5.6	2.8	2.3		3.1	2.9				
	Power Consumption(kWh/24h)	1.4		2.4	3.8	3.1	5.3	3.3		3.8	6.6	4	/		/	/				
Construction	Capacity (L/Cu.Ft)		92/3.2		262/9.3		278/9.8		348/12.3		490/17.3		568/20.1		138/3.9		255/9.0	380/13.4		
	Net/Gross Weight (approx)	kg	46/51		88/93		115/135		137/145		164/200		190/215		52/65		76/96		90/115	
		lbs	101.4/112.4		194.0/205.0		253.5/297.6		302.0/320.0		361.6/440.9		418.9/474		114.6/143.3		167.5/211.6		198.4/253.5	
	Interior Dimensions (W*D*H)	mm	435*410*635		480*465*1430		520*435*1230		535*610*1228		685*610*1228		610*755*1260		580*445*620		1000*445*620		1450*445*620	
		in	17.1*16.1*25.0		18.9*18.3*56.3		20.5*17.1*48.4		21.1*24.0*48.3		27.0*24.0*48.3		24/29.7/49.6		22.8*17.5*24.4		39.4*17.5*24.4		57.1*17.5*24.4	
	Exterior Dimensions (W*D*H)	mm	640*610*810		700*705*1665		770*710*1810		790*845*1860		940*845*1860		848*951*1780		790*770*950		1210*770*950		1655*770*950	
		in	25.2*24.0*31.9		27.6*27.8*65.6		30.3*28.0*71.3		31.1*33.3*73.2		37.0*33.3*73.2		33.4/37.4/70.1		31.1*30.3*37.4		47.6*30.3*37.4		65.2*30.3*37.4	
Packing Dimensions (W*D*H)	mm	660*700*900		775*760*1880		832*757*1992		852*927*2044		997*927*2044		900*1035*1910		815*800*990		1255*800*990		1695*800*990		
	in	26.0*27.6*35.4		30.5*29.9*74.0		32.8*29.8*78.4		33.5*36.5*80.5		39.3*36.5*80.5		35.4/40.7/75.2		32.1*31.5*39		49.4*31.5*39		66.7*31.5*39		
Loading Quantities	Container Load (20'/40'/40'H)		48/108/108		21/45/45		21/42/42		12/28/28		12/24/24		12/26/26		28/56/56		22/46/46		14/28/28	
Alarms	High/Low Temperature		Y		Y		Y		Y		Y		Y		Y		Y		Y	
	Remote Alarm		Y		Y		Y		Y		Y		Y		Optional		Optional		Optional	
	Power Failure		Y		Y		Y		Y		Y		Y		Y		Y		Y	
	Sensor Error		Y		Y		Y		Y		Y		Y		Y		Y		Y	
	Low Battery		/		/		Y		Y		Y		/		/		/		/	
	High Ambient Temp		Y		Y		Y		Y		Y		Y		Optional		Optional		Optional	
	Door Ajar		Y		Y		Y		/		/		Y		/		/		/	
Accessories	Caster		Y		Y		Y		Y		Y		Y		Y		Y		Y	
	Foot		Y		Y		Y		Y		Y		Y		/		/		/	
	Porthole		Y		Y		Y		Y		Y		Y		Y		Y		Y	
	Drawers/Inner Doors		3/-		7/-		6/-		12/-		10/-		- / 2		/		/		/	
	USB Interface		Optional		Optional	/	Optional		Optional		Optional		Optional		Optional (USB or RS485, either-or)		Optional (USB or RS485, either-or)		Optional (USB or RS485, either-or)	
	RS485		Optional		Optional		Optional		Optional		Optional		Optional		Optional (USB or RS485, either-or)		Optional (USB or RS485, either-or)		Optional (USB or RS485, either-or)	
	Temperature Recorder		/		/		Optional		Optional		Optional		Optional		/		/		/	
Certification	CE	Y		Y	/	Y		Y		Y		Y		CE		CE		CE		

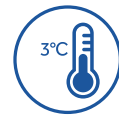
Product appearance and specifications are subject to change without notice

**Typical Installation and Application**

Haier Biomedical -30°C biomedical freezer: safe and reliable dual-system, intelligent hot gas defrosting, hydrocarbon energy saving

**DW-30L1280F****Key Features****Hydrocarbon energy saving: green and environmental protection**

Utilizing green, eco-friendly and super low GWP HC refrigeration technology the energy consumption is as low as 8 kW/24H.

**Intelligent defrosting: prolongs the defrosting cycle and safeguards the stability of the storage temperature**

Intelligent defrosting reduces the number of cycles, which reduces the temperature fluctuation caused by defrosting during the sample storage cycle; it does this by intelligently identifying the amount of frost on the evaporator.

**Dual independent refrigeration systems: ultimate sample security and safety**

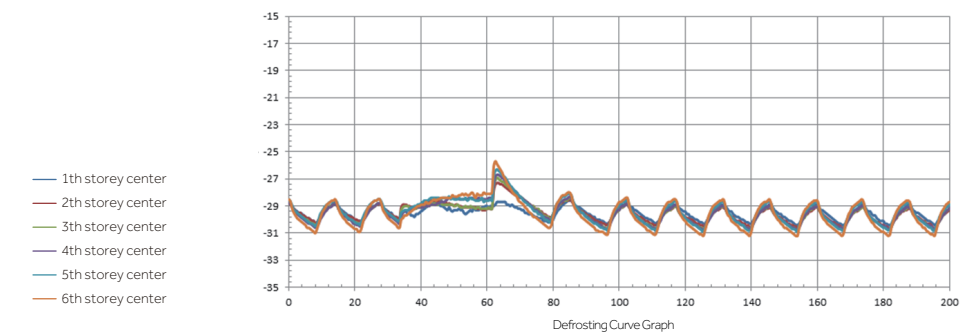
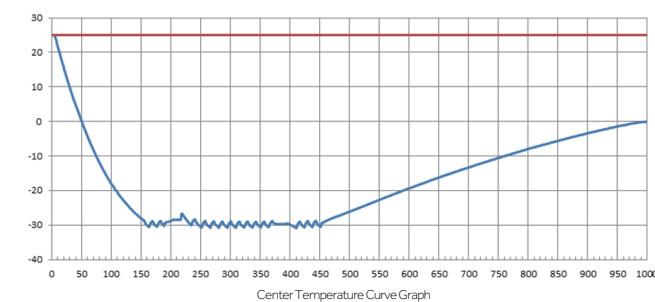
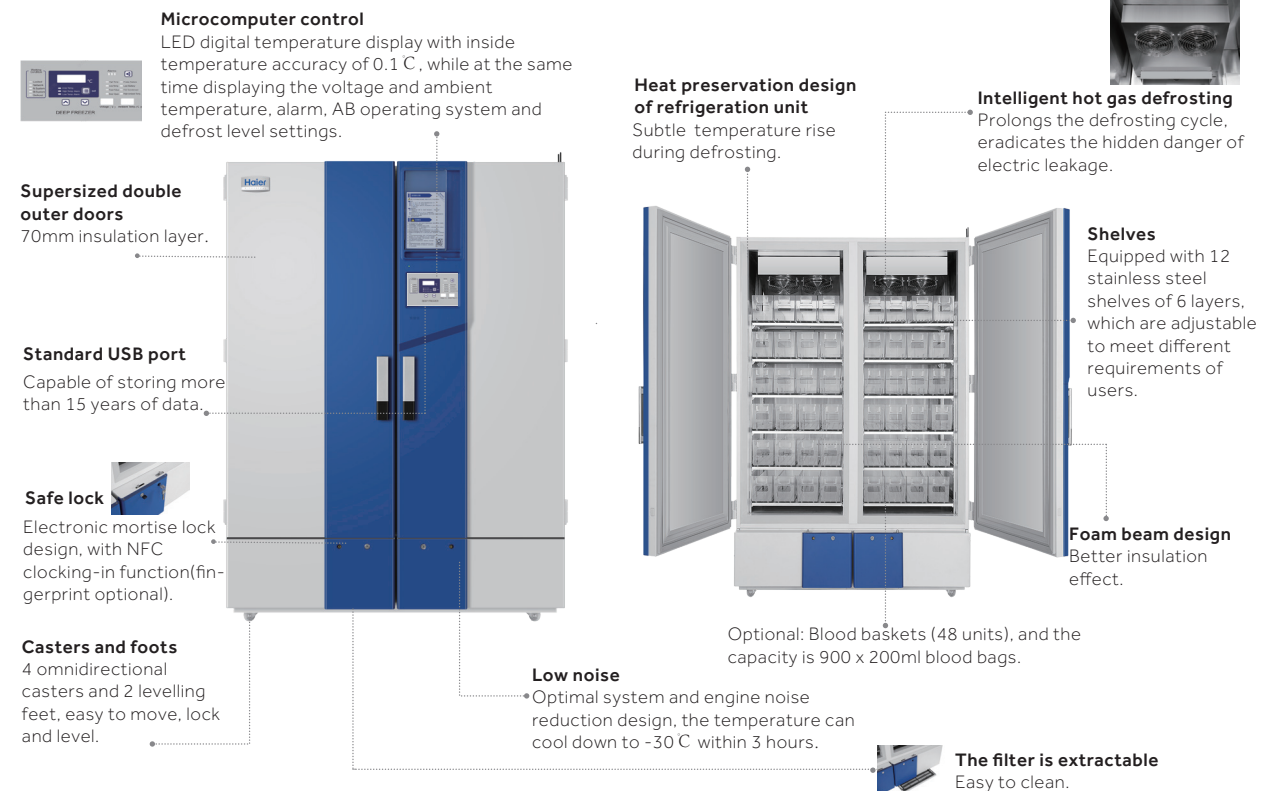
Two independent systems work together to deliver excellent temperature uniformity  $\pm 3^{\circ}\text{C}$  ( $\pm 5^{\circ}\text{C}$  during defrost) and provide extra sample security and peace of mind, with the knowledge that if one system fails, the other maintains the unit at  $-25^{\circ}\text{C}$ .

**Hot gas defrosting technology: safe and efficient**

Fully-automatic hot gas defrosting technology is deployed instead of an electrical heating element, this is quicker, safer and more efficient.

**Low noise**

Optimize system and engine room noise reduction design, noise: 45.4db (220V/50Hz test data).

**Product Advantages**

Specifications

Model			DW-30L1280F
Technical Data	Cabinet Type	Upright	
	Climate Class	N	
	Cooling Type	Air cooling	
	Defrost Mode	Automatic (Evaporator), Manual (Inner cabinet & Door frame)	
	Refrigerant	HC	
	Noise (dB(A))	46	
Performance	Cooling Performance (°C)	-30	
	Temp Range (°C)	-10~-30	
Control	Controller	Microprocessor	
	Display	LED	
Electrical Data	Power Supply (V/Hz)	220~240/50	
	Power (W)	900W (220V/50Hz)	
	Electrical Current (A)	4.5	
	Power Consumption (kWh/24h)	8	
Construction	Capacity (L/Cu.Ft)	1280/45.2	
	Net/Gross Weight(approx)	kg	420/480
		lbs	925/1058
	Interior Dimension(W*D*H)	mm	1320*752*1260
		in	52/29.6/49.6
	Exterior Dimension(W*D*H)	mm	1520*1065*1980
		in	60/42/78
Loading Quantities	Packing Dimension(W*D*H)	mm	1570*1080*2130
		in	61.8/42.5/83.8
	Container Load (20'/40'/40'H)	6/14/14	
Alarms	High/Low Temperature	Y	
	Remote Alarm	Y	
	Power Failure	Y	
	Sensor Error	Y	
	Low Battery	Y	
	High Ambient Temperature	Y	
	Door Ajar	Y	
Accessories	Castor	Y	
	Foot	Y	
	Porthole	Y	
	Drawers	12	
	USB Interface	Y	
	RS485	Y	
Certification	CE	Y	

F suffix - Forced air cooling  
Product appearance and specifications are subject to change without notice

Typical Installation and Application

Suitable for sample storage within blood banks, hospitals, disease control centres, research institutes, electronic, chemical and other industries, cryopreservation of plasma, biologics and other products, also suitable for cold tests for components and materials.

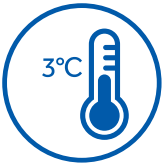


DW-30L818BP

Key Features



**Energy saving with variable frequency inverter technology**  
Optimized refrigeration system with a high efficiency inverter compressor to reduce energy consumption.



**Excellent temperature uniformity in a large storage space**  
Features built-in evaporator, large storage space and adjustable shelf, providing faster temperature pulldown and a better temperature uniformity of set point ±3°C.



**Low noise**  
Sound reduction design lowers the sound level to 37dB(A) at 220V/50Hz.



**Environment Friendly**  
1)HC refrigeration system contains zero chlorine and fluorine,which is better for the environment.  
2)Urethane foam insulation complies with European ROHS regulation.



**Product Advantages**

Ergonomic Design: document holding compartment for storing size A4 paper and pens.

Optional USB port allows users to download temperature data saved up to 10 years for compliance and auditing purposes.

Microprocessor temperature control: LED displays cabinet temperature with 0.1°C resolution, ambient temperature, and input voltage.

Double door seals for better insulation performance.

Pressure equalization port for easy door opening.

Ergonomic handle design: easy access to storage space, built in lock and padlock features.

Casters and leveling legs for ease of maneuvering and positioning.

Powder coating galvanized interior with large round corner design, corrosion resistance and easy to clean.

Inner door design reduces loss of cold air to improve energy efficiency and stable temperature.

Adjustable shelves made with stainless steel or coated steel.

**DW-30L818BP****Microprocessor Control System**

- Microprocessor-based temperature control.
- Large LED displays cabinet temperature with 0.1 °C resolution with adjustable temperature setting from -10 °C to -30 °C.
- Cabinet temperature, ambient temperature and voltage are shown on the panel.
- Alarm conditions include high and low temperature, sensor error, power failure, low battery, door ajar and high ambient.
- Alarm modes are audible and flashing lights. Remote alarm terminals are available.
- Battery supports display and alarm system for forty eight hours after power outage.
- Optional features are IoT module, USB port, temperature recorder and NFC swipe card functions.

**Insulation**

- 70 mm thick insulation.
- Inner doors for better thermal efficiency.

**Porthole**

- Two standard portholes allow ease of temperature testing.

**Security Lock**

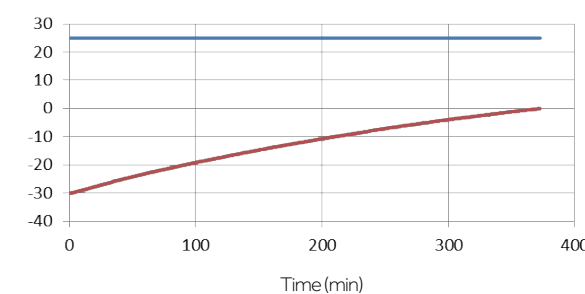
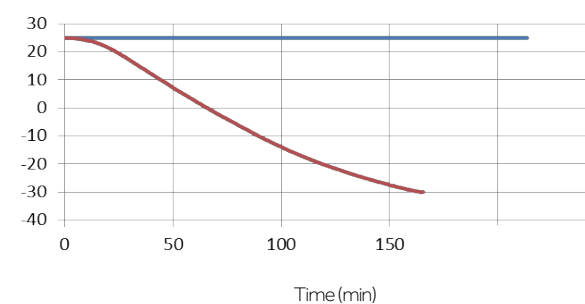
- Lock is standard. Magnetic lock is optional for added protection and security

**Temperature Recorder**

- Optional temperature recorder for temperature recording and compliance.

**Typical Performance Characteristics at 25°C ambient**

— Ambient Temp.  
— Center Temp.



Product Advantages

Easy to clean and corrosion resistant

Electric zinc plate powder sprayed internal liner and large round corner design and coated steel plate exterior design ensure reliable corrosion prevention which is easy to clean.

Ergonomic handle design: easy access to storage space, built in lock and padlock features.

4 multi-directional casters and 2 lockable feet make it easy to move, level and lock in place.



DW-30L818

Microcomputer electronic thermostat, LCD digital display of inside temperature, with 0.1 C display accuracy.



Flexible internal storage

Equipped with 5 plastic coated steel wire shelves with optional stainless steel shelves, which are adjustable to meet the different requirements of users.

Double seal design provides better insulation and saves energy.



Inner doors prevent rapid loss of cold air, saving energy and reducing temperature fluctuations.

Specifications

	Model	DW-30L818	DW-30L818BP
Technical Data	Cabinet Type	Upright	Upright
	Climate Class	SN N	SN N
	Cooling Type	Direct Cooling	Direct Cooling
	Defrost Mode	Manual	Manual
	Refrigerant	HC	HC
	Sound Level (dB(A))	44	37 (220V/50Hz)
Performance	Cooling Performance (°C)	-30	-30
	Temp Range (°C)	-10~-30	-10~-30
Control	Controller	Microprocessor	Microprocessor
	Display	LCD	LED
Electrical Data	Power Supply (V/Hz)	220-240/50	100-230/50/60
	Power (W)	380	680
	Electrical Current (A)	2.8	7.7
	Power Consumption (kWh/24h)	3.5	3.3
Construction	Capacity (L/Cu.Ft)	818/28.9	818/28.9
	Net/Gross Weight (approx)	kg	205/235
		lbs	451.9/518.1
	Interior Dimension (W*D*H)	mm	750*755*1460
		in	29.5*29.7*57.5
	Exterior Dimension (W*D*H)	mm	988*951*1980
		in	38.9/37.4/78.0
	Packing Dimension (W*D*H)	mm	1040*1060*2150
		in	40.9/41.7/84.6
Loading Quantities	Container Load (20'/40'/40'H)	10/22/22	10/22/22
Alarms	High/Low Temperature	Y	Y
	Remote Alarm	Y	Y
	Power Failure	Y	Y
	Sensor Error	Y	Y
	Low Battery	/	Y
	High Ambient Temperature	Y	Y
	Door Ajar	Y	Y
Accessories	Castor	Y	Y
	Foot	Y	Y
	Porthole	Y	Y
	Inner Doors	3	3
	Temperature Recorder	Optional	Optional
	USB Interface	Optional	Optional
	RS485 Port	Optional	Y
Certification	CE	Y	Y
	UL	/	Y
	Energy Star	/	Y

BP suffix - Variable frequency inverter compressor  
Product appearance and specifications are subject to change without notice



This freezer is designed for storage of critical and temperature sensitive biological samples, laboratory products and medical products in institutions such as blood banks, hospitals and research laboratories.



### Key Features

- Forced air and auto defrost design: -30°C storage temperature with automatic defrost cycles guided by time and temperature, ensure maximum temperature stability and minimize energy use
- High-performance refrigeration system: achieves excellent temperature uniformity with intelligent operation control at -30°C
- Microprocessor control with digital display: 0.1°C control increments, adjustable range of -10°C to -30°C



Door lock  
and padlock



Backup battery  
protection



USB



Malfunction  
Alarms

### DW-30L420F



Drawer (Optional)



Microprocessor control panel



Air distribution



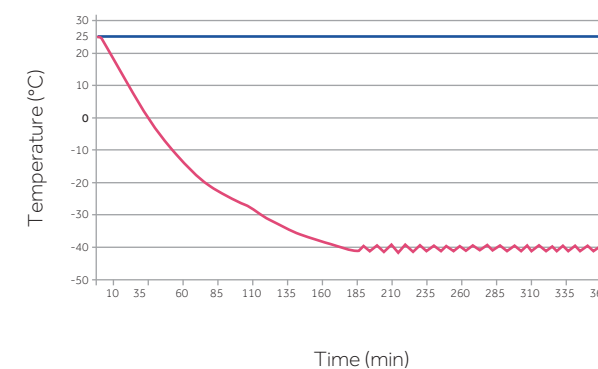
### Safety

- Alarm system includes audible and visual alerts. Alarms include high and low temperature, sensor error, power failure, door ajar, low battery and high ambient temperature. Remote contacts are standard
- Backup battery provides continuous monitoring and displays the interior temperature for up to 48hrs in the event of a mains power failure
- Standard USB port on DW-30L420F allows users to download temperature data
- Lockable door with padlock for added sample security

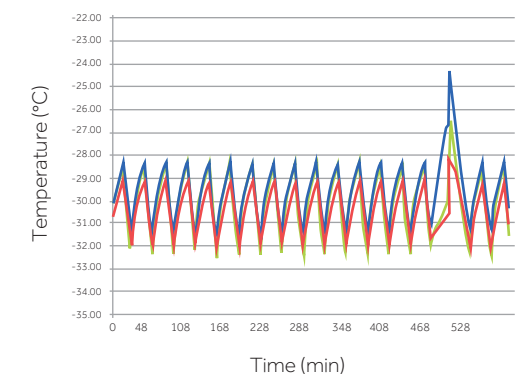
### Ergonomic Design

- Self-closing door with 90° stay-open feature conserves energy and helps maintain temperature uniformity to protect your valuable samples
- Corrosion-free interior brushed stainless steel liner and exterior coated steel plate
- 5 adjustable stainless steel shelves and optional drawer
- Casters and levelling legs, easy to move and lock

Pull down test at 25°C ambient



Temperature Uniformity



\*Freezer set-point -30 °C, ambient temperature 25 °C

Haier Biomedical -30°C biomedical freezer with smart control and energy-saving hydrocarbon refrigeration system for safe and reliable product storage.

**DW-30L278****DW-30L508**

## Application

Biomedical and life science laboratories within blood banks, hospitals, disease control centres and research institutes as well as electronics and chemical industries. Used for cryopreservation of plasma, biological samples and other products and cold tests for components and materials.

## Advantages

- **High-efficiency and energy-saving compressor and refrigeration system**

Industrial grade energy-saving compressor and optimized cooling system reduces power consumption by more than 55% compared with older models.

- **Superior temperature uniformity**

Evaporator-shelf design speeds up the cooling process and provides a more uniform temperature distribution. The temperature uniformity at specific points throughout the unit is  $\pm 4^{\circ}\text{C}$ .

- **Green and environmentally friendly**

Hydrocarbon refrigerant compressor system and use of hydrocarbon refrigerants makes the refrigeration system completely green and environmental friendly. Built with isopentane foam polyurethane insulation, which complies with European RoHS Directive.

- **Low sound level**

Sound-reducing design with optimized system reduces the sound level, smoother operation eliminates high-pitched noise.

## Key Features



- **Microprocessor control system:**

- Microprocessor temperature controller, LCD temperature display, display accuracy at  $0.1^{\circ}\text{C}$ .
- Adjustable temperature setting from  $-10^{\circ}\text{C}$  to  $-30^{\circ}\text{C}$
- Multiple alarm functions including high temperature alarm, low temperature alarm, sensor failure alarm and power failure alarm
- Sound and flash alarm
- Alarm lasts for more than 24 hours after power failure



- **Excellent temperature-retaining ability**

High efficient insulation and double-sealing design improves temperature performance, energy efficiency and system reliability



- **Lock**

Lock latch and key lock double-lock design provides an extra level of security



- **Porthole**

Porthole design is standard



- **Recorder**

Optional chart temperature recorder available

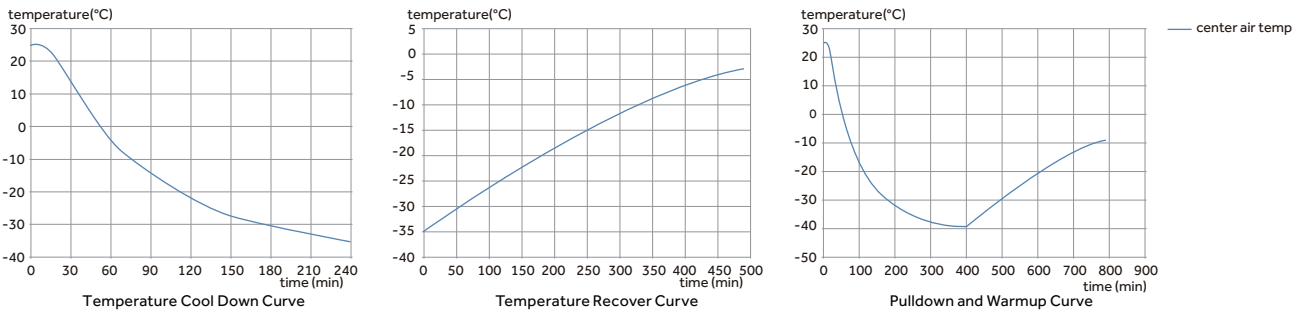






DW-30L508

DW-30L508 | TYPICAL PERFORMANCE CHARACTERISTICS AT 25°C AMBIENT



Specifications

	Model	DW-30L420F	DW-30L278	DW-30L508	
Technical Data	Cabinet Type	Upright	Upright	Upright, Double Door	
	Climate Class	SN N	SN N	SN N	
	Cooling Type	Forced air Cooling	Direct Cooling	Direct Cooling	
	Defrost Mode	Automatic (Evaporator), Manual (Inner cabinet & Door frame)	Manual	Manual	
	Refrigerant	HC	HC	HC	
	Sound Level (dB(A))	46	40	41	43
Performance	Cooling Performance (°C)	-30	-30	-30	
	Temperature Range (°C)	-10~-30	-10~-30	-10~-30	
Control	Controller	Microprocessor	Microprocessor	Microprocessor	
	Display	LED	LCD	LCD	LED
Electrical Data	Power Supply (V/Hz)	220~240/50	208~230/60	220~240/50	115/60
	Power (W)	460/1000(Defrost)		330	530
	Electrical Current (A)	4.0/5.8(Defrost)		2	3
	Power Consumption (kWh/24h)	4.6	5.3	2.3	2.8
Construction	Capacity (L/Cu.Ft)	420/14.8		278/9.8	
	Net/Gross Weight (approx)	kg	195/225		115/135
		lbs	429.9/496.0		253.7/297.7
	Interior Dimension (W*D*H)	mm	685*610*1028		520*435*1230
		in	27.0*24.0*40.5		20.5*17.1*48.4
	Exterior Dimension (W*D*H)	mm	950*920*1900		745*675*1810
		in	37.4*36.2*74.8		29.3*26.6*71.3
	Packing Dimension (W*D*H)	mm	980*935*2040		805*725*1970
		in	38.6*36.8*80.3		31.7*28.5*77.6
Loading Quantities	Container Load (20'/40'/40'H)	12/24/24		21/44/44	
Alarms	High/Low Temperature	Y		Y	
	Remote Alarm	Y		/	Y
	Power Failure	Y		Y	/
	Sensor Error	Y		Y	
	Low Battery	Y		/	/
	High Ambient Temperature	Y		/	/
	Door Ajar	Y		/	/
Accessories	Caster	Y		Y	
	Foot	Y		Y	
	Porthole	Y		Y	
	Drawers/Inner Doors	-/3	6/-	6/-	10/-
	Temperature Recorder	Optional		Optional	
	USB Interface	Y	Optional	/	/
	RS485	Optional		/	/
Certifications	CE	Y	/	Y	/
	UL	/	/	/	Y

Product appearance and specifications are subject to change without notice

The Haier Biomedical -25°C biomedical freezer maximises storage space. Integrated cold shelf and evaporator design provides maximum refrigeration efficiency.



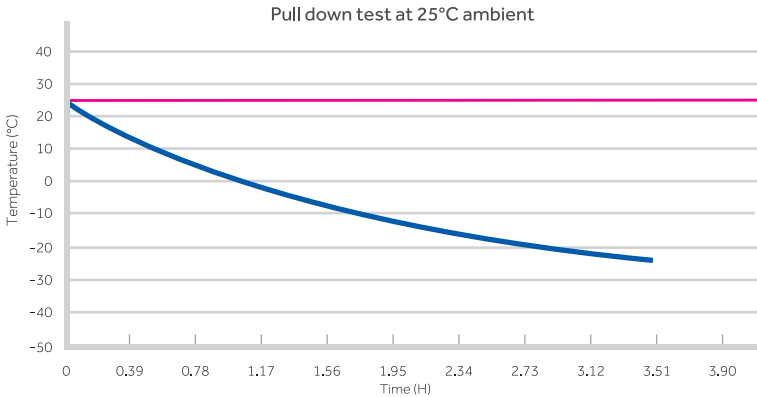
DW-25L262

Reliability and Key Features

- Chemically stable,HC commercially available and environmentally safe refrigerant
- High density foam insulation for rigidity and stable storage temperature
- Microprocessor control, digital display, adjustable temperature range: -10°C~-25°C
- LED digital display for clear observation
- Wide voltage tolerance design with applicable voltage range of 187~242 V/AC

Safety

- Multiple malfunction alarms including high low temperature, sensor error
- Two types of alarm indications: audible buzzing and visible flashing light
- Door lock for storage safety
- Storage drawer



Specifications

Model		DW-25L92		DW-25L262	
Technical Data	Cabinet Type	Upright		Upright	
	Climate Class	SN N		SN N	
	Cooling Type	Direct Cooling		Direct Cooling	
	Defrost Mode	Manual		Manual	
	Refrigerant	HC		HC	
	Sound level ((dB(A))	27	28	34	34
Performance	Cooling Performance (°C)	-25		-25	
	Temperature Range (°C)	-10~-25		-10~-25	
Control	Controller	Microprocessor		Microprocessor	
	Display	LCD		LCD	
Electrical Data	Power Supply (V/Hz)	220~240/50	115/60	220~240/50	115/60
	Power (W)	255	125	270	135
	Electrical Current (A)	1.2	1.8	1.4	2.6
	Power Consumption (kWh/24h)	0.65	0.49	0.95	0.73
Construction	Capacity (L/Cu.Ft)	92/3.2		262/9.3	
	Net/Gross Weight (appox)	kg	46/51	88/93	
		lbs	101.4/112.4	194.0/205.0	
	Interior Dimensions (W*D*H)	mm	435*410*635	480*465*1430	
		in	17.1*16.1*25.0	18.9*18.3*56.3	
	Exterior Dimensions (W*D*H)	mm	640*610*810	700*705*1665	700*705*1730
		in	25.2*24.0*31.9	27.6*27.8*65.6	27.6*27.8*68.1
Loading Quantities	Packing Dimensions (W*D*H)	mm	660*700*900	775*760*1880	775*760*1890
		in	26.0*27.6*35.4	30.5*29.9*74.0	30.5*29.9*74.4
Alarms	Container Load (20'/40'/40'H)	48/108/108		21/45/45	
	High/Low Temp	Y		Y	
	Sensor Error	Y		Y	
	Door Ajar	Y		Y	
Accessories	Remote Alarm	Y		Y	
	Caster	Y		Y	
	Foot	Y		Y	
	Porthole	Y		Y	
	Drawers	3		7	
	USB Interface	Optional	/	Optional	/
	RS485	Optional		Optional	
Certifications	CE	Y	/	Y	/
	UL	/	Y	/	Y

Product appearance and specifications are subject to change with out notice